

5 WONDERS of WAKEFIELD



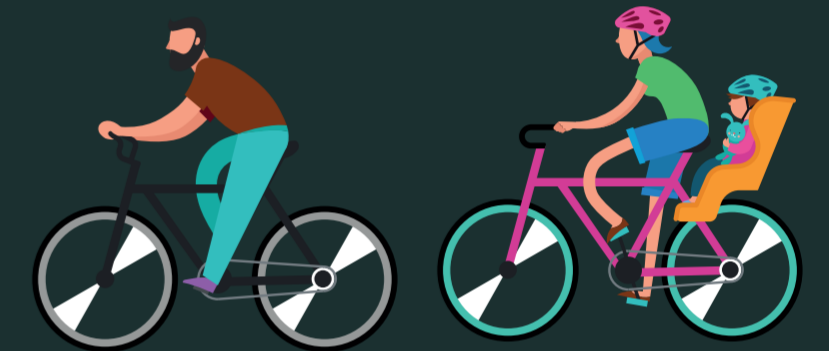
- A. Nostell
- B. The Chantry Chapel
- C. Sandal Castle
- D. The Hepworth
- E. Heath Village

Points of Interest

1. Walton Hall
2. Haw Park Wood
3. Barnsley Canal
4. Old Chevet Branch Line
5. Kettlethorpe Hall

Wakefield Parks

- Anglers Country Park
- Pugneys Country Park
- Walton Colliery Nature Park
- Newmillerdam Country Park



Wakefield District Cycle Forum, with the support and assistance of Wakefield Council, has linked 21 miles of these cycle paths together to create a circular route named the Wonders of Wakefield – the WoW.

Cycle Maps When you've completed the WoW, why not try the Wakefield Wheel, known as the 'Wheel'? It's a 38 mile route encircling the City of Wakefield and can be identified by the wheel logo on the direction signs.

Maps of these two trails appear in the Maps section on both the Forum's website www.cycling-wakefield.org.uk and the Cycle Wakefield site www.cyclewakefield.co.uk.

Wakefield District Cycle Forum is a voluntary organisation which promotes and campaigns for better cycling facilities for all cyclists within the Wakefield District. To join, find out more or volunteer as a helper or ride leader visit: www.cycling-wakefield.org.uk

Improving Cycling Infrastructure The Cycle Forum works with a number of partners, in particular Wakefield Council, to improve on and off-road infrastructure for cyclists and develop a comprehensive network of cycle routes. The Cycle Forum also helps to maintain the off-road network with its volunteer force.

Cycle Rides The Cycle Forum runs a programme of guided cycle rides throughout the year which start from Agbrigg, Castleford, Darrington, Eastmoor, Nostell, Pontefract, Rycroft, and Thornes Park. These rides are primarily intended to help people who want to cycle but lack confidence and range from **Easy** rides, which are very short, flat and off-road, through **Steady**, slightly longer and a bit faster, to a more challenging road ride for those with more fitness and confidence. All rides are free and people who do not have their own bike can often borrow one.

Cycle Events The Cycle Forum runs and attends events throughout the district to promote cycling and provide information about cycling in the district. Some events have a skills course for youngsters in particular to try out their cycling abilities. These events are publicised on our Facebook page and the cyclewakefield.co.uk website.

Membership You can join the Cycle Forum for a small one-off fee. The larger our membership, the greater our influence on all things cycling. Members of the Forum are kept up to date with developments through regular newsletters, our website and Facebook page.

KEY

- Traffic free WoW route
- On road WoW route
- Points of interest
- National Cycle Route 67